

The Texas Theatre

Tech Packet Info - rev March 2024
231 W. Jefferson Blvd Dallas TX 75208



HISTORY

The Texas Theatre was opened on April 21, 1931.

The design included opera boxes in the auditorium under a full night sky, fountains, projected clouds on the ceiling, and a giant chandelier. The completed theatre was the largest “suburban” movie house and the third-largest theatre in Dallas.

The theater was “fireproof” – constructed entirely of concrete. The theatre was the first in the area built for talking pictures and it featured the second-largest Barton organ in Dallas. The cooling and ventilation system blew 200,000 cubic feet of air per minute through a water-cooled system pumped from a 4,000-gallon tank. The cooling system made “The Texas” the first theater in Dallas with air conditioning. Billionaire film producer and renowned aviator Howard Hughes and his business partner Harold B. Franklin, another Hollywood producer, briefly owned the Robb & Rowley movie theater chain in the early 30’s during construction and opening of the Texas Theatre.

On November 22, 1963 at approximately 1:45 p.m., nearly 15 Dallas police officers converged on the Texas Theatre in search of a man who had entered without paying. That man was Lee Harvey Oswald – murder suspect in the slaying of Officer J.D. Tippit and later President John F. Kennedy’s accused lone assassin. He ducked into the theatre during an in-progress showing of War Is Hell and sat near the back of the auditorium until he was apprehended

Shortly thereafter the theater’s vibrant designs, false bridges, towers and campaniles, decorative wood railings, and star and cloud painted ceilings were sealed from public view under a Spanish-style stucco re-design. Eventually United Artists closed the theater in 1989.

In 2001 the 501 3c The Oak Cliff Foundation purchased the building. Several areas of the building were renovated and upgraded by the OCF. The Texas Theatre was added to the National Register of Historic Places in 2003.

In 2010 The Texas Theatre re-opened to the public as a destination for movies and live events under a new group called Aviation Cinemas, who also purchased the building from the Oak Cliff Foundation.

In 2021, Aviation Cinemas completed a \$2 million dollar expansion of the theater via a new upstairs second auditorium, new seating area in the balcony and a new upstairs full bar. The new upstairs room can seat 165 patrons, offers 35mm and Digital Cinema projection, state of the art surround sound and is fully ADA compliant with a chair lift and elevator access, as well as hearing and visual impaired device assistance. The new capacity of the main auditorium was increased to 670. Additional stage and production upgrades were made in 2023 and 2024.

MAIN ROOM

651 Seated Capacity downstairs

+24 Seats in the Upstairs Balcony = 670 seated capacity, 750 w/ standing room fire code

Upstairs Auditorium

165 Seated + ADA for 170 total.

(ask about Simulcast options for upstairs auditorium)



[illegible]

19.6ft Height To Truss
32ft - stage depth
44ft - stage width

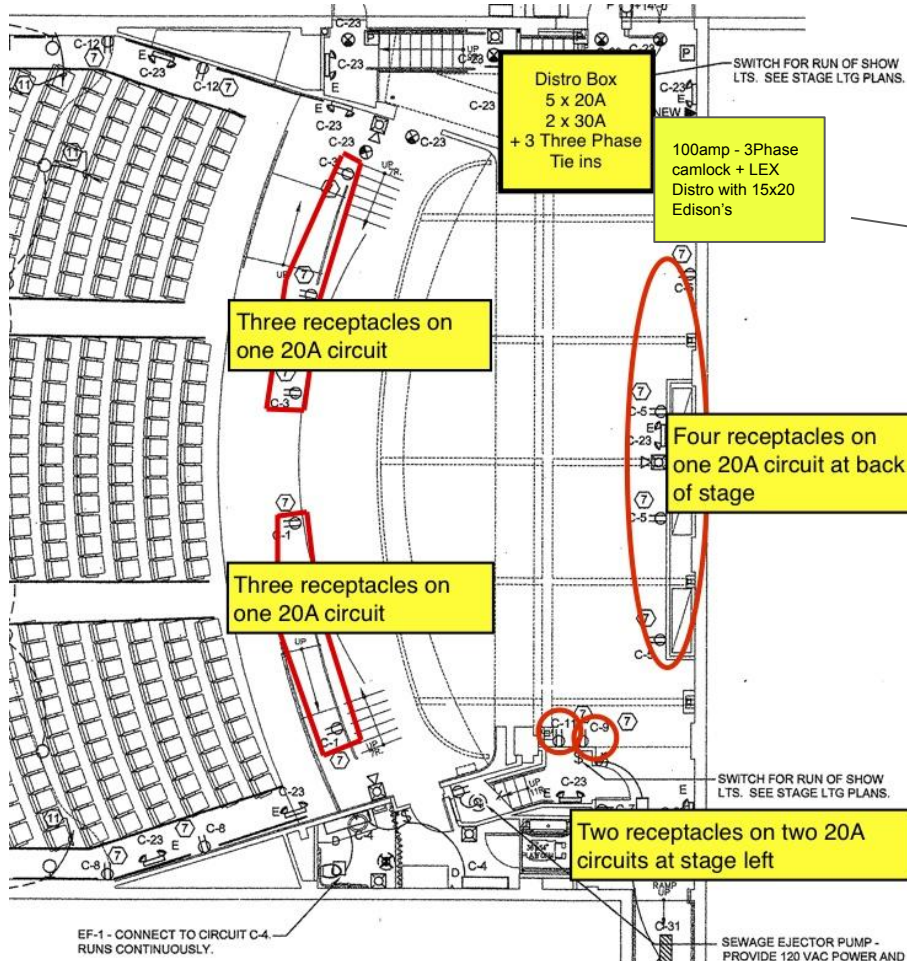
2550

1824 sf

UPSTAIRS AUDITORIUM



Stage Power Annotation



Lighting Info

Lighting Positions

- 1 - Upstage CM Motorized Line Set for Rented in/ touring Gear
- 1 - Backstage Fixed Line Set across stage width (need rented lift to reach)
- 4 - Mezzanine Iweiss Schedule 40 Pipe Tormentors for front positions

Lighting Console

The house lighting console is an ETC Colorsourc 40.

+ Leprecon LP612 Backup Board

DMX tie-in

For tour consoles, DMX tie-ins are available at FOH console position and on stage into ETC Gateways.

Lumen Radio / ChauvetWireless DMX send/ receive kits

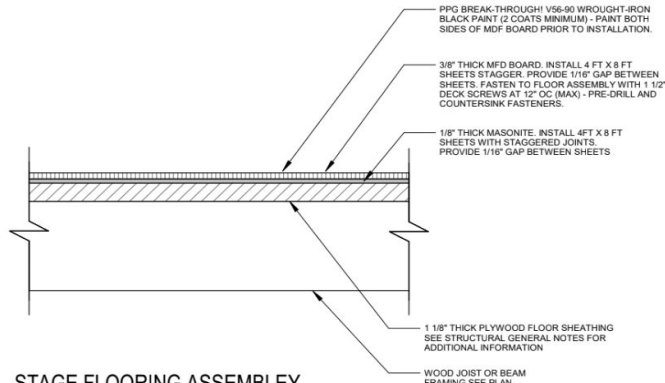


Full Stage Re-built Jan 2024

Engineered for Heavy equipment, triple layered for maximum durability by Garver (top 100 engineering firm)
Four stage boxes added for power drops and XLR pass throughs

FLOOR LOAD CAPACITY
125 LBS
PER SQUARE FOOT

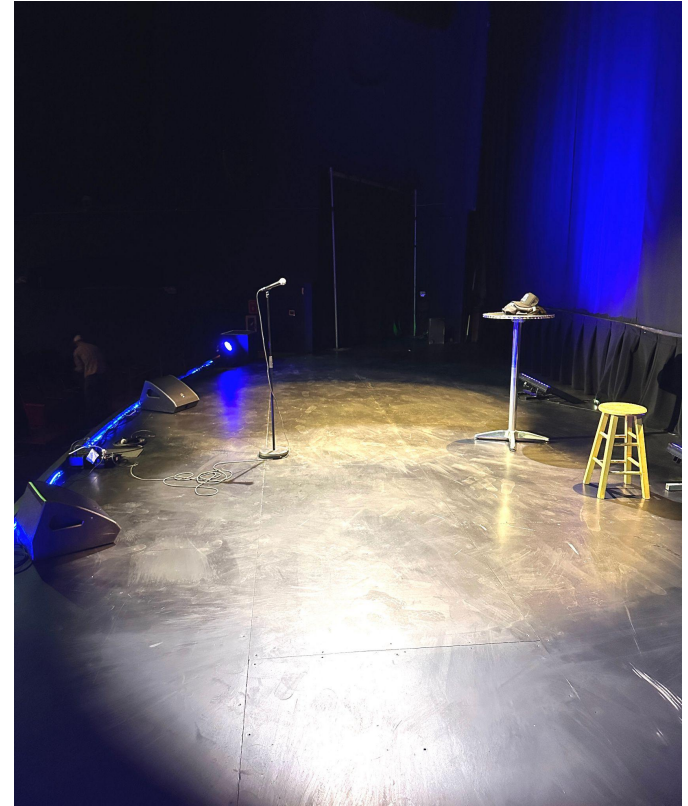
RATED FOR A MAXIMUM MECHANICAL LIFT WEIGHT OF 4,000 LBS



7

STAGE FLOORING ASSEMBLY

3" x 1-1/2"



House Lighting Gear

Chauvet E910 RGB Ellipsoidal (x2) - Balcony
ADJ 12P HEX bar (x2) - Stage
ADJ Encore LP12IP RGBL LED Par (2) - Stage
Chauvet S-Par1 LED (x2)
ETC Source 4 Jr. 36' 575W (x3) - Balcony
ColorTran 50' Fresnel (x1) - Backup
ADJ LED Spotlight FS3000 (x1) - Balcony
ETC Source 4Wrđ LED (x2) 36' – overhead Back stage
ETC Colorsourcē Fresnel V (x2) - Balcony
ETC Colorsourcē JR -overhead -(x2)
ADJ Focus Flex 7 Mover (x2)

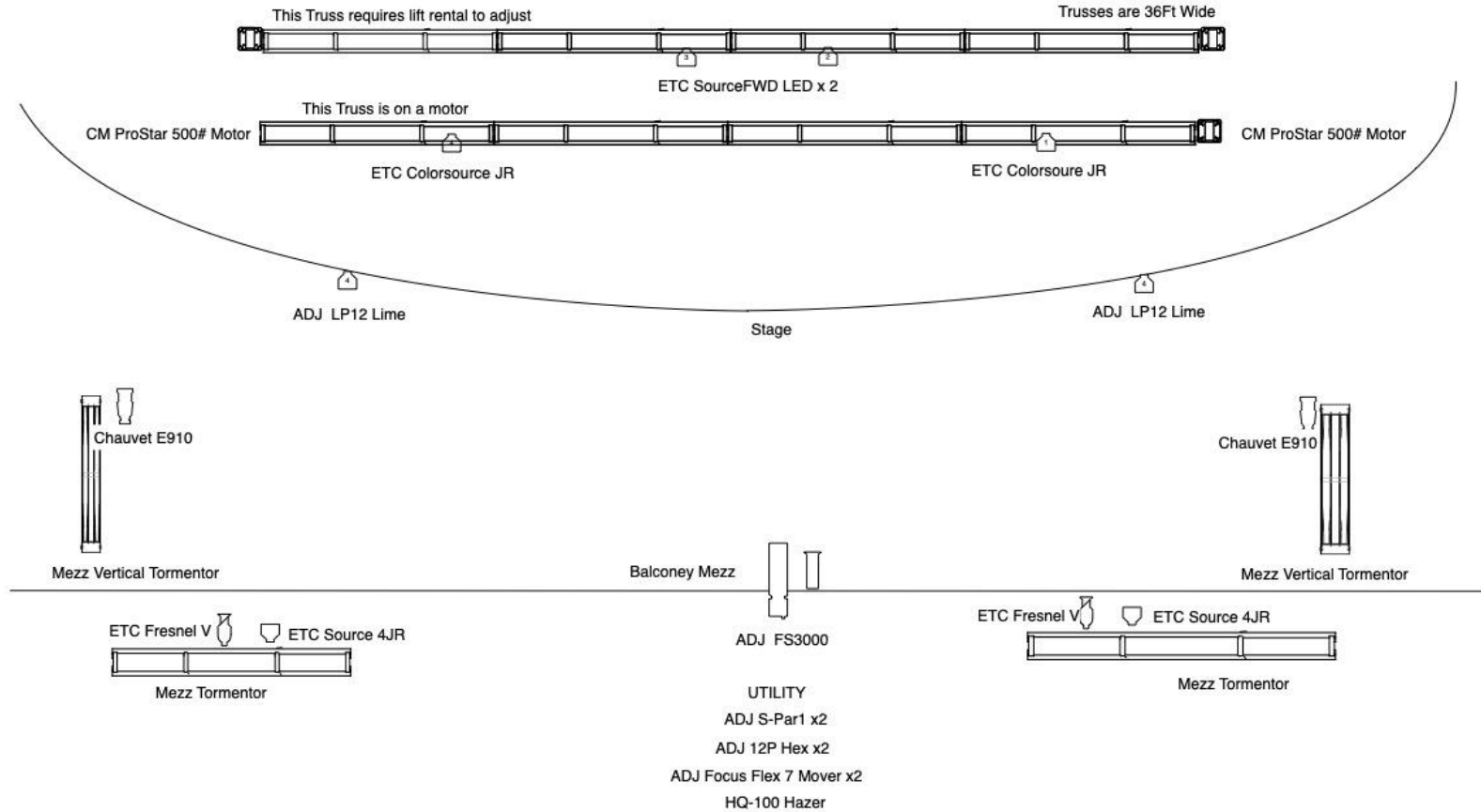
Hazer

House hazer is a **High End Systems HQ-100**. We require rented in hazers to be water-based. Please discuss smoke/haze needs with us ahead of time to decipher if paid fire watch is required. + DMX Stage Fan available.

Screen is moveable back and forth. Scissor Lift Rental Required to rig Backstage Line Set



Light Plot



Audio Equipment

Live Audio Gear:

Flown QSC KLA12 Triple Line Array + 2 QSC KLA181 Subs. + 2 **Meyer** AMIE Subs.

- + 3 **Meyer** UPM Series Powered Fills for Under-Balcony delays.
- + QSC KLA12(s) for Center Fills on stage can be set.
- + 2 Mackie DLM8 fills in Mezzanine

Midas M32R Live + Midas DL16 Stage Box with Dedicated Wifi Router - (FOH Position Flexible)

- + X32 Producer Digital Console + S16 Digital Snake (for monitor world or behind the screen)
32 Pre-amp ins and 16 outputs are house console maxes. (+6 Aux I/O)

2 QSC K10's for Monitors, Mackie Thump (x5) for Stage Monitors or DJ speakers

EV PXM 12MP Dedicated Powered Stage Monitors x 3

Whirlwind 16x4 150ft + Whirlwind 8x4 50ft analog snakes.

150ft Ethercon in place. (+ shorter utility ethercon if needed)

QSC KLA12 Dual Line Array for Behind The Screen shows or additional center fills or mains. (w/ poles)

Mics:

Shure SM58 (x4), SM57 (x3), Sennheiser e835 (x2), KSM8, Rode M1 (x2), NT3, NT55 , NTG3,
, e609 cab mic (x2), e906, Drum Mic Kit e600, 904, Beta56a, Beta91a, qty 2 Sennheiser EW100 Wireless Handheld & Lav

Other:

Rolls DI's, Whirlwind DI's, Radial DI's, Radial J48, Mackie 1202FX, Mackie 802, Zoom H6 Recorder, UA Solo Tube Pre.

Dedicated Cinema Sound:

JBL LCR + Surrounds / QSC Dual Ch. Sub. 5.1 Dolby Digital 650 Processor + QSC Q-SYS CORE

Dedicated DJ Booth Sound:

QSC ADS12 + ADS10 with Amp Rack + Mackie or DJ A&H Xone23 Mixer , Pioneer DJ Turntables x2 + (BYO cartridges)

Video/ Film Equipment

Digital Cinema DCP: Christie 4315 RGB Laser 4K + Dolby IMS2000 Server - Main Room.
Christie 4220 4K DCI Image, 22K Lumens, Doremi Cinema Server - upstairs auditorium

HD Video: Playback can be run from the stage via a RGB cable (which can pass 1920x1080) or via AJA HD-BaseT to HDMI Converters/ CAT6 cable. Or via Decimator HDMI to HD-SDI run in place. Mini DisplayPort-to-VGA / HDMI dongles & HDMI Converter are avail in house.
Legacy Oppo and Denon Blu-Ray players.

Film: Dual 35mm Christie changeover system, Kodak/ Elmo 16 mm.

Cinema Sound: JBL/ Dolby / QSC Q-SYS 7.1 Dolby Digital.

Installed Screen Downstairs: 38ft Harkness 2.35 aspect + 1.4 Gain. Moveable via ceiling truss.

Installed Screen Upstairs : 35ft Harkness 2.35 aspect with 1.0 Matte + Mini-Perf

Portable Screens: 25ft 16x9 Inflatable 16x9; 12ft 16x9 Da-Lite Tripod Screen.
Portable HD Video Playback system w/ multi-input scaler.

Production Misc

- RTS Intercom System OMS OMNEO w/ 4 belt pack kits - 2 wired + 2 wireless + base station for up to 5 users.
- Motorola Walkies on request
- Main Green Room - with couch, sink, power fans, mirrors, water kettle and fridge
- There are 2 additional upstairs private green rooms/ dressing rooms
- One Private Bathroom in upstairs green room area backstage
- Single shower room with dedicated hot water heater
- No on-site laundry but there is a laundromat right behind the theater.
- Tables and T-shirt grids available for lobby use for merch
- Lobby Merch area and backstage WIFI (Use SSID : "TTProduction"
PW : 231WJefferson)
- ADA Performer Stage Lift available for use

Production Contact - Barak Epstein 214-529-3725
Barak@aviationcinemas.com

Production Parking and Load In

The Texas Theatre's Loading Zone is located at the rear of the theater in the alley facing **Sunset Ave.** After load in please park your vehicles or buses in the City of Dallas lot behind the theatre. 50amp/ 30amp / 20amp shore power at back doors. We can provide 100ft 50amp shore power cable to bus area. And there is a additional 20amp circuit in the parking lot that can be accessed.

Parking overnight is ok. [Here is a google parking map](#)

Loading Doors

The double loading door measures 14" tall and 10"wide.

Shore Power Box



Green Rooms Behind the screen / Upstairs



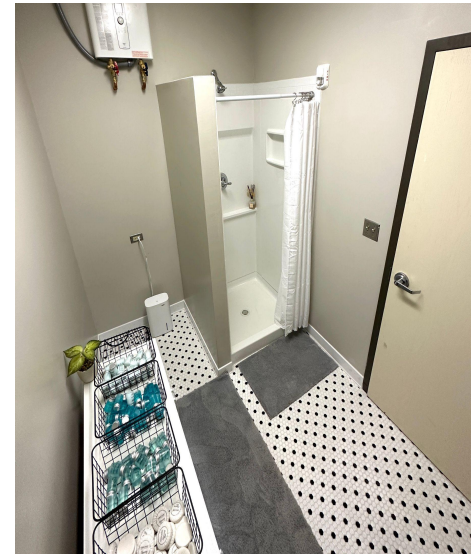
A - 9 x 11



B - 8 x 12



C - 8 x 12



Shower Room

MAIN ROOM

Auditorium Shots



Example Podcast/ Acoustic Show Look



Filmmaker / Movie star Event



World Premiere Event

With City Street Closures on Jefferson Blvd



Examples of Music / Other Setups

Seu Jorge



Chelsea Wolfe



Behind The Screen Shows

Alternate Space - Standing room for approx 165 people.

Screen is moved to “movie” location. Dual Array Floor Stacked QSC system Set behind screen + M32 Console.

Modular Stage moved into place.

ColorBand Lights and Pars + two 4ft Pipe Tormentors for additional rigging

